

# Wireless microphone



Operating manual

## Digital pilot Series induction microphone system characteristics

**Industry automatic induction hand patent technology, left hand phone still within 3 seconds after automatic mute (any direction, at any Angle Can be), automatic energy saving into standby mode after 5 minutes, 15 minutes after the automatic shutdown and completely cut off the power supply, is a new The concept of intelligent, automated wireless microphone**



*Automatic mute microphone still 3 seconds*



*Mute 5 minutes automatically turn off the launch*



*The state of energy saving province electricity*



*Mute automatic shutdown after 15 minutes*

- new audio circuit structure, the high is exquisite, the low frequency is strong, especially on the details of sound with perfect performance.super Strong dynamic tracing ability makes far/near distance easy pick up charge
- a new concept of digital pilot technology, completely solve KTV rooms each string frequency phenomenon, never string frequency!
- configuration has the noise suppression function circuit, debugging easier
- automatic search no interference channel function, installation more convenient
- free to limit output maximum volume, adapt to the range
- UHF frequency band, phase-locked loop (PLL) frequency synthesis
- 100 \* 2 channel, channel spacing 250 KHZ
- superheterodyne secondary frequency conversion design, have extremely high receiving sensitivity
- rf part adopts multilevel high-performance medium filter, good anti-interference ability
- the first intermediate frequency acoustic filters, the second intermediate frequency use level 3 ceramic filter, very good to improve the anti-interference ability
- especially the mute circuit design, completely eliminate the microphone turned on and off the impact of the noise
- the microphone use tesco 5 batteries, with up to 6–10 hours
- the microphone adopts unique design of booster battery down does not affect the hand cannot overall performance
- the ideal environment for operating radius of 80 meters, suitable for all kinds of requirements
- the default configuration for LCD backlight blue, mike duct aluminum alloy body
- have adjustable adjustable transmission power and noise threshold, after receiver panel is set external noise control knob, can be in 10 meters
- according to need Flexible setup effective radius of operation between 80 metres
- have ir automatic frequency function, can make the microphone to work fast synchronization and receiver channel
- KTV engineering special models, two microphone, a host.Easily configure more than 100 KTV rooms, the product structure design is unique,Quick and easy maintenance.

**Applicable occasions: suitable for high-grade KTV room, small and medium-sized performances, classroom, meeting room, etc., is this year's key new products, are extremely Customer welcome.Packing type: conventional color box packaging (see sample)**

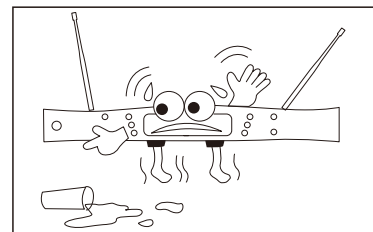
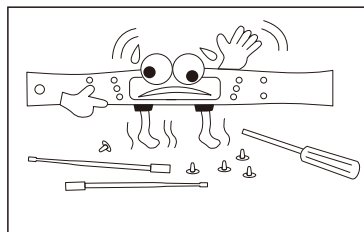
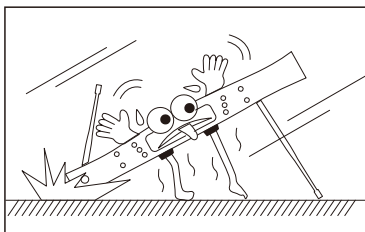
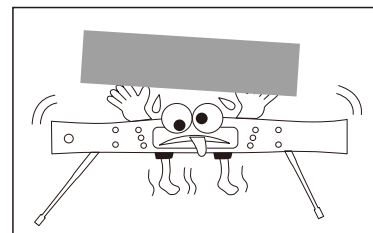
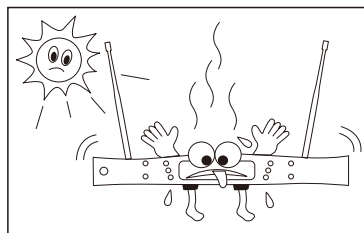
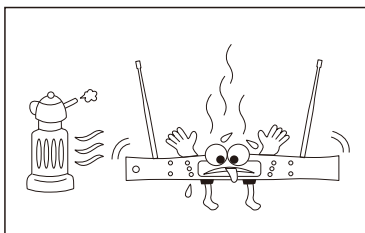
**Welcome and thank you for purchasing our wireless microphone system!** With years experience to producing wireless microphone system, our crews are confident to say we are the expert of manufacturing wireless microphone system. Our products are suitable for KTV room, karaoke stage and also school, showplace, stadium, and so on, Our products are convenient to operate, and of stably great quality. So they are widely favoured by our customers. We promise highly of first class quality, and also first class service. Our professional technician crew is always ready to help you with any technical questions!

**Warning: Beware of electric shock fine; machine must be kept away humid conditions!**



**Strictly readers are told**

- 1.read the user guide-read carefully about safety and manipulation requests.
- 2.keep the manipulation introductions-please keep this manual for further need of safety and manipulation requests.
- 3.beware of the warnings-please notice the warnings for the machine while operating.
- 4.follow the denotements-please follow the denotements while operating.
- 5.accessional devices-only accessional devices from original producers of the machine are required.
- 6.humidity cautions-keep the machine away from humid condiction
- 7.aeration-please keep the machine in well ventilated conditions at all time, there should be at least 5cm clearance around the device.
- 8.heat source-please keep the devices away from heat sources, including, radiator, heater, stove, etc
- 9.power supply-please utilize the labeled voltage on the device.
- 10.no exposed fire should be no the device e.g. flaming candles
- 11.please do not litter the batteries, dispose them into the appointed place when they are fully used.
- 12.no liquid or weights should be on the device, no water dripping or splashing onto in to the device.
- 13.the device is also suitable in torvied zone, and variable zone.



**Do not operate our baby of the situations as above! Only professionals can disassemble and assemble the system!**

## Faults and solutions

Problems	Solutions
No sound: (Status: receiver RF display does not light up)	<ul style="list-style-type: none"> <li>◆Check whether the transmitter and receiver are powered on</li> <li>◆Check the antenna connection of the receiver</li> </ul>
No sound:No sound: (Status: receiver RF display does not light up)	<ul style="list-style-type: none"> <li>◆Check whether the receiver volume knob is in the minimum position</li> <li>◆Check whether the receiver connection line is correctly connected.</li> </ul>
No sound: (Status: receiver RF display is normal, AF display is	<ul style="list-style-type: none"> <li>◆Check whether the receiver is powered on.</li> <li>◆Replace the pick - up lever of the transmitter if necessary</li> </ul>
Switch on the transmitter, and the received signal has noise or external signal interference	<ul style="list-style-type: none"> <li>◆Check whether the battery is securely installed.</li> <li>◆Eliminate nearby RF interference sources</li> <li>◆Check whether there are other transmitters of the same frequency, and turn off other transmitters of the same frequency</li> <li>◆The signal may be too weak, reposition the antenna as close to the transmitter as possible</li> <li>◆Change another channel.</li> </ul>
There are noises at the receiver after the transmitter is shut down	<ul style="list-style-type: none"> <li>◆Eliminate radio frequency noise sources</li> <li>◆Readjust the antenna position of the receiver</li> </ul>
Unable to open transmitter	◆Replace the battery

## Product Configuration List

Receiver 1Set

Transmitter..... 2Set

Audio cable..... 1Pieces

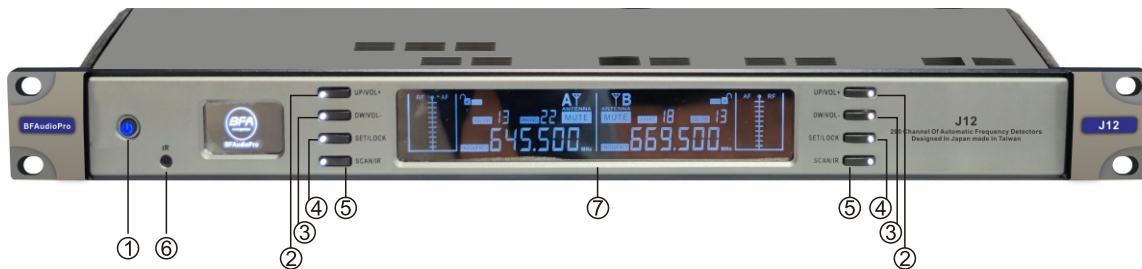
Battery ..... 4Pieces

Receiving antenna..... 2Pieces

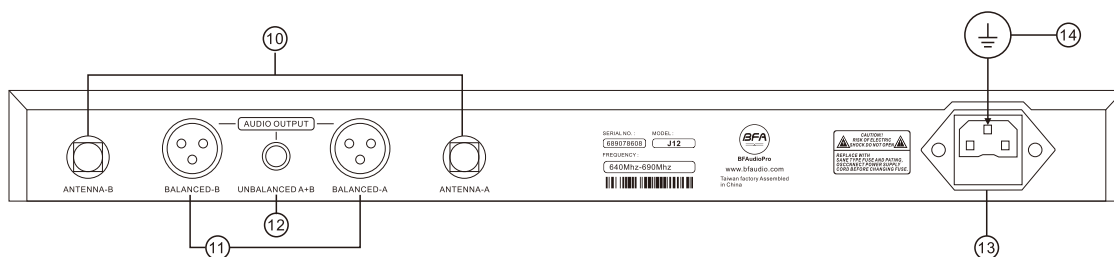
Manual, certificate and warranty card..... 1Copy

\*\*\*\*\*1\*\*\*\*\*

## Name and function of receiver front and rear panel

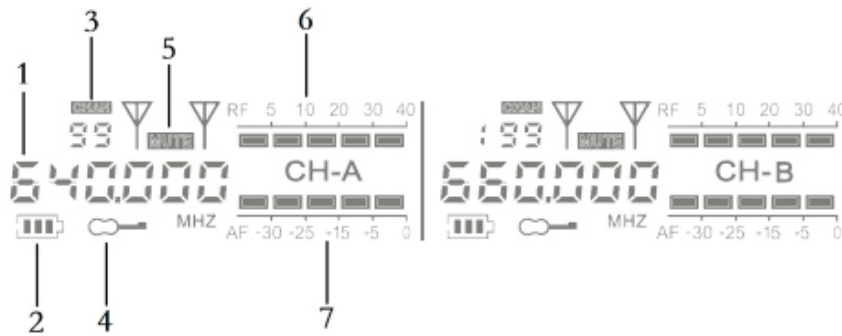


1. Power
2. UP/VOL+ in A or B Channel
3. DN/VOL- in A or B Channel
4. SET/LOCK Short Press to Open Setting interference Or Long Press to Open or Lock the FM
5. SCAN/IR Short Press to Frequency Matching IR(Infrared Ray) Function Or Long
6. Press to AFS(Automatically Frequency Searching) Function  
IR Infrared Ray Signal
7. LCD Display Screen



10. Antenna Sockets
11. A/B XLR Balance Output Socket
12. A+B Unbalance Output Socket
13. AC220V Power Socket
14. Grounding Connection

## Receiver display description



1.Frequency display

2.Transmitter battery level

3.Channel display

4.Adjustment locking status

5.Mute state of the host

6.RF signal strength

7.Audio signal strength

## Handheld transmitter

### 1, MICROPHONE, THE SHAPE OF THE STRUCTURE

(1) LCD screen

(2) Infrared receiving window

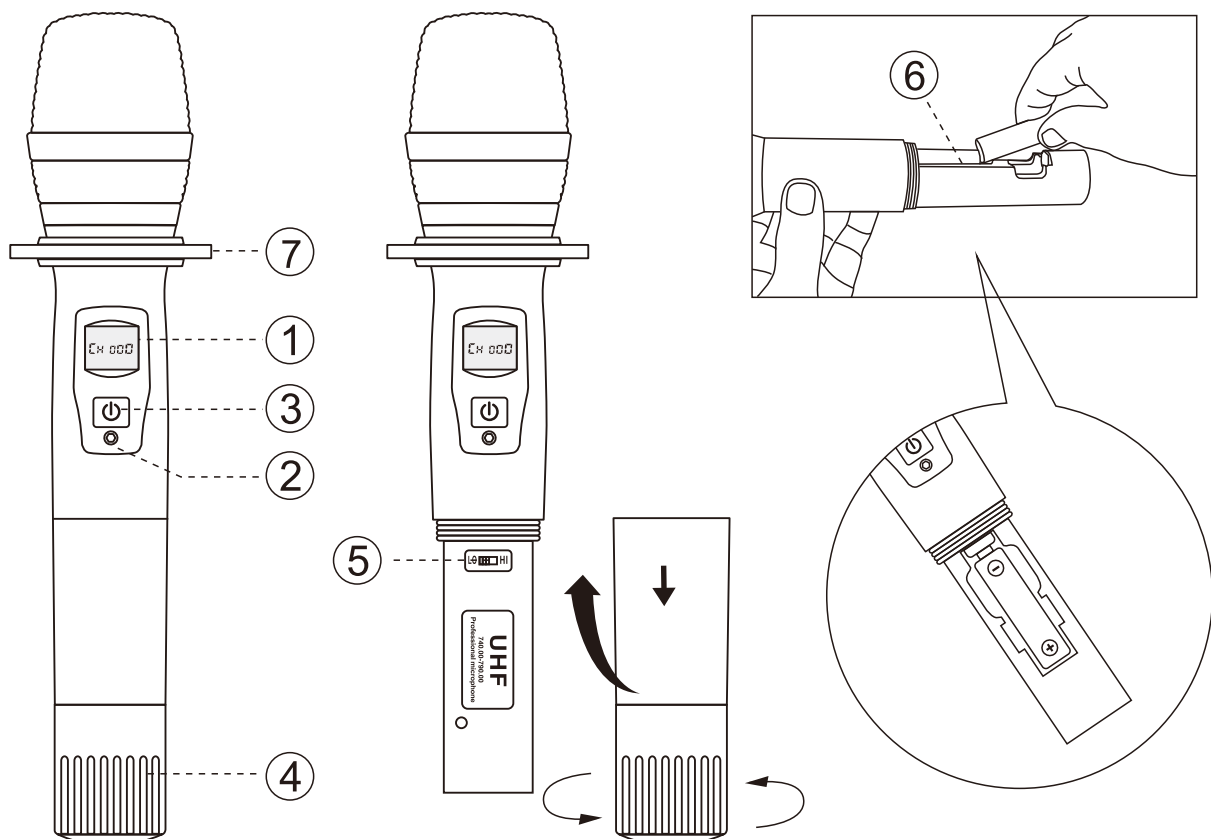
(3) The power switch

(4) The tail cone

(5) High \ low power switch

(6) Battery compartments

(7)All landowners roll ring





## Menu operating instructions

1. Infrared frequency pair: Receiver and transmitter in normal display mode, short press corresponding receiving channel SET key, the display shows the IR receiver progress bar, infrared frequency at startup, aim the launcher infrared window receiver infrared window, when the emitter, after the completion of receiving frequency will be updated the same as the receiver, receiver RF level signal display the current signal strength, After the completion of infrared frequency matching, the receiver automatically saves and exits the frequency matching operation
2. Channel frequency setting: directly press the key ▲ and ▼ to adjust the frequency channel of the corresponding channel. After the adjustment is completed, press the SET key to exit, or wait for 5 seconds to exit automatically
3. Volume setting: Directly turn the knob to adjust the volume of the corresponding channel, and press the SET key to exit after adjustment, or wait for 5 seconds to exit automatically
4. Extension function setting: Long press the SET key to enter the extension function setting.
  - 4.1 Automatic search for idle channels: in normal mode, long press the SET key, the screen displays SCAN, at this time, press the key ▲ and ▼ corresponding channels will enter the automatic search function. When the receiver search the channel without interference, it will automatically save and exit the search, enter the frequency state
  - 4.2 ID function setting: Short press the SET key under the state of SCAN shown in 4.1 on the screen, and the screen displays ID ON/OFF. At this time, press the key ▲ and ▼ to select ID ON/OFF. After the selection, press the SET key to enter the next menu or wait for 5 seconds to exit automatically. (ID ON and ID OFF function introduction, ID ON is used in the normal mode of the setting, in this mode, the host can only be used with the last successful frequency of the hand. ID OFF is the test mode, in this mode, the host can receive any transmitter with the same frequency. The default is ID ON, to prevent cross-frequency)
  - 4.3 Induction function Settings: on the screen display 4.2 state, short press the SET key, the screen shows FO ON/OFF, at this time press the key ▲ and ▼ for FO ON/OFF selection. The induction function refers to the hand sensing automatic mute function of the microphone. FO ON means the hand sensing function is turned ON, and FO OFF means the hand sensing function is turned OFF. This function is set to take effect at the next hand frequency. At the same time, this function can also be set through the hand (some models of the hand has this setting, the method is: the hand boot state long press the
  - 4.4 Key lock setting: on the screen display 4.3 state, short press the SET key, the screen shows LOC, at this time press the key ▲ and ▼ for LOC ON/OFF selection. After the adjustment is completed, press the SET key to exit, or wait for 5 seconds to exit automatically. After the lock is complete, the "Key" icon is displayed on the screen, and function Settings cannot be performed. Therefore, you need to access this menu again to unlock the key.

## Technical indicators

System parameters:	
Frequency range	640mHz-690mHz
Modulation method	PLL frequency synthesis
Adjustable number of channels	100x2
Channel spacing	250kHz
Stability of	$\pm 0.005\%$
Dynamic range	100dB
Maximum deviation	$\pm 45\text{KHz}$
Audio frequency	40-18KHz ( $\pm 2\text{dB}$ )
Comprehensive	$<0.5\%$
Integrated	$>105\text{dB}$
Receiver parameters	
Receiving mode	Superheterodyne secondary frequency conversion
Pilot mode	Digital pilot
Audio output	Balanced output and mixed output
Antenna access	TNC/500hm
Intermediate	110mhz/10.7mhz
Sensitivity of	12dBuV (80db S/N)
Power supply	12VDC/2A
Emitter parameters:	
Pickup head	Moving coil
Frequency	Infrared to frequency
Spurious harmonic	-60dB
RF power output	3-30mW
Power supply mode	2 Pieces N05. AA battery
Battery life	Can be used for more than 8 hours



